



Architerra

Quickship 2025



Installation by and Photo courtesy of JH Landscaping

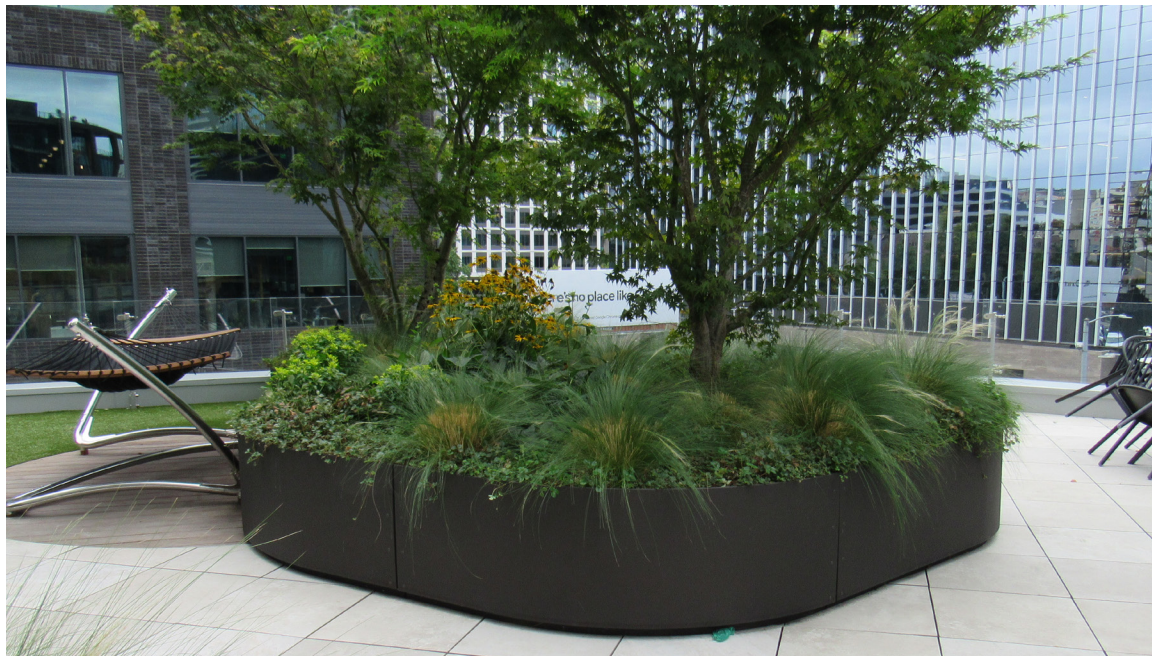


Photo courtesy of Jett Landscape Architects



Architerra products available with standard finish and wood options shipped in 2-3 weeks.

Lead time

Quickship products normally ship in 2-3 weeks. Quantities generally limited to 6 per item. Additional quantities or other standard/custom products normally ship in 6-8 weeks

Customizable

See something that isn't quite what you're looking for? We are happy to customize standard products or work from a provided design.

Smart

Turnkey solutions that address common challenges and enable simpler, cleaner installations. Proudly built by highly-skilled Architerra craftsmen in the USA

Responsible

We believe we have an obligation to design products that improve the environment we live in. Our products contain up to 85% recycled content and are fully recyclable.



Mixed-Use/ Seattle, WA

Contents

Recuro Bioretention Planters	8
Forma Planter System	12
Planters	18
Seating	22
Decorative Screens	30
Features & Options	32
Material, Color Options, & Finishes	33
Ordering	34

Recuro Bioretention Planter

Protecting the environment is an essential responsibility of any landscape project. We believe in going one step further, designing a bioretention solution that complements the design of your space while actively improving the ecology that sustains it.

Smaller Footprint

Most bioretention solutions today are built from concrete, requiring walls at least eight inches thick in addition to the required bioretention footprint. Quickship Recuro planters are built with .190" thick marine grade aluminum or weathering steel to allow for a significantly smaller footprint than concrete-based solutions. This smaller footprint means you can place more units, making it easier to exceed filtering guidelines. Other standard products available in thicker sizes.

Simple to Install

Concrete bioretention solutions can occupy large areas of your project with equipment for days at a time. Recuro's aluminum or steel construction allows it to be installed by a small team in just a few hours.

Customizable

Recuro's modular design and powder coated aluminum construction enables it to be customized to fit your specific space constraints and visual aesthetic.

Sustainable

As part of our obligation to maximize the conservation of natural resources, Recuro is made from 25-85%+ recycled content and is fully recyclable. We also ensure there's a transparent chain of custody back to the raw material source. In an effort to reduce or eliminate the usage of hazardous materials, Recuro is RoHS 3 compliant, and we only use coatings with low to no VOC emissions.

Approved

Recuro is designed to be compatible with several types of filter soils and media to meet requirements across multiple municipalities. Recuro is approved for use by the Washington State Department of Ecology as a functional equivalent technology.



Mixed-use building / Seattle, WA



Photo courtesy of Jett Landscape Architecture

Mixed-use building / Redwood City, CA

Noninfiltrating



Standard with top flange.

Model	Width	Length	Height
RNI-F-190-244840	24	48	40
RNI-F-190-244848	24	48	48
RNI-F-190-247240	24	72	40
RNI-F-190-247248	24	72	48
RNI-F-190-249640	24	96	40
RNI-F-190-249648	24	96	48
RNI-F-190-364840	36	48	40
RNI-F-190-364848	36	48	48
RNI-F-190-367240	36	72	40
RNI-F-190-367248	36	72	48
RNI-F-190-369640	36	96	40
RNI-F-190-369648	36	96	48

*Standard (1) drainport is located at narrow end of planter.

Level Spreader



Shown with optional Splash Block, Coupling, and end cap.

Body

Model	Width	Length	Height
A-RLS-BB-125-36	6	36	3
A-RLS-BB-125-48	6	48	3
A-RLS-BB-125-72	6	72	3

Coupling

Model	Width	Length	Height
A-RLS-C-125-6	6.25	3	3.25
A-RLS-CS-125-6	6.25	3	8

Port/End Cap

Model	Width	Length	Height
A-RLS-EC-125-6	6.25	.25	3.25
A-RLS-P-125-6	8	3.5	5

*Available in .125" thick stainless steel or powder coated aluminum.

Modular Noninfiltrating



Sections up to L 96" bolted together for numerous size and shape combinations for larger single cells.

Model	Width	Length	Height
RNIM-F-190-244840	24	48	40
RNIM-F-190-244848	24	48	48
RNIM-F-190-247240	24	72	40
RNIM-F-190-247248	24	72	48
RNIM-F-190-249640	24	96	40
RNIM-F-190-249648	24	96	48
RNIM-F-190-364840	36	48	40
RNIM-F-190-364848	36	48	48
RNIM-F-190-367240	36	72	40
RNIM-F-190-367248	36	72	48
RNIM-F-190-369640	36	96	40
RNIM-F-190-369648	36	96	48

*Standard (1) drainport is located at narrow end of planter for each end modular connection.

*Must note if (1) or (2) ends are modular style when ordering.

Splash Block



Shown with optional outlet for Level Spreader.

Model	Width	Length	Height
A-RLS-SB-125-1212	12	12	6
A-RLS-SB-125-1818	18	18	6
A-RLS-SB-125-2424	24	24	6

*Available in .125" thick stainless steel or powder coated aluminum.

Forma Modular Planters & Planter Walls

With a simple and straightforward design and installation process, these modular planters and planter walls are ideal for on-grade and on-structure applications such as roof gardens, amenity decks, green roofs, and edge restraints. All Forma products can be adapted to work with other custom landscape elements or site furnishings.

Standard Components

Quickship Modular planters and walls are 18" – 36" tall and 4' – 8' long, available in straight, curved, and angled configurations. Walls include bottom flange to distribute weight and hold wall in place with weight of soil. Multiple products can be fastened together for extended lengths with a nearly seamless appearance. Additional sizes available with standard lead times.

Versatile

Forma's design and construction allow for a variety of uses and site locations. Available with adjustable tiebacks and structural bracing.

Customizable

Forma's modular design and metal construction enables it to be customized to fit your specific space constraints and visual aesthetic. Available options include seating, site amenities and other Architerra standard options.

Simple to Install

No fabrication needed on site. All necessary hardware, bracing, and accessories are included. The design allows for quick and seamless installations on structure and grade without needing anchors.

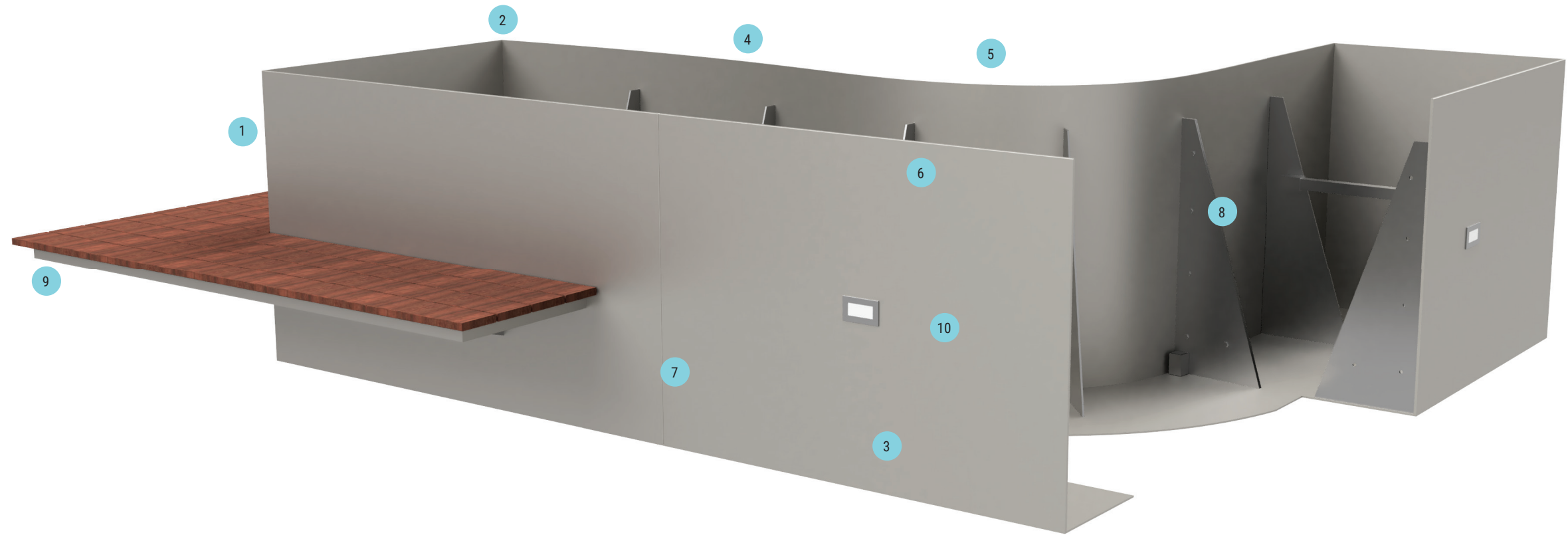


Google / Kirkland, WA



Mixed-use / Seattle, WA

Installation by and Photo courtesy of J&S Landscaping



Forma Modular Wall

1. Powder coated aluminum, mild or weathering steel .190" thick.
2. All joints formed or welded and ground smooth.
3. Standard lengths 4',6',8'.
4. Available in straight, angled, or curved shapes.
5. Freestanding up to 36" (style dependent).
6. Top available in straight side.
7. Joints available in fitted style.
8. Sections easily align and bolt together with mating flange.
9. Mounting brackets to add seating elements.
10. Integral wall washes, step lights, or hidden strip lighting available.

Notes:

- Engineering services available for structural or civil needs.
- Can be set on grade, on structure, geo foam, pavers, or paved surfaces.
- Many scenarios do not require mounting to a structure or surface.
- High performance low VOC coatings available.

Straight - Freestanding



Wall sections up to L 96".

Model	Length	Height
FMW-FSS-4818	48	18
FMW-FSS-6018	60	18
FMW-FSS-7218	72	18
FMW-FSS-9618	96	18
FMW-FSS-4824	48	24
FMW-FSS-6024	60	24
FMW-FSS-7224	72	24
FMW-FSS-9624	96	24
FMW-FSS-4830	48	30
FMW-FSS-6030	60	30
FMW-FSS-7230	72	30
FMW-FSS-9630	96	30
FMW-FSS-4836	48	36
FMW-FSS-6036	60	36
FMW-FSS-7236	72	36
FMW-FSS-9636	96	36

Curved - Freestanding



Outside Corner shown.

Inside

Model	Length	Radius	Height
FW-FCUIS-382418	38	24	18
FW-FCUIS-382424	38	24	24
FW-FCUIS-382430	38	24	30
FW-FCUIS-382436	38	24	36

Outside

Model	Length	Radius	Height
FW-FCUOS-382418	38	24	18
FW-FCUOS-573618	57	36	18
FW-FCUOS-382424	38	24	24
FW-FCUOS-573624	57	36	24
FW-FCUOS-382430	38	24	30
FW-FCUOS-573630	57	36	30
FW-FCUOS-382436	38	24	36
FW-FCUOS-573636	57	36	36

Corner - Freestanding



Inside Corner Shown.

Inside

Model	Length	Height
FW-FCOIS-242418	24L1x24L2	18
FW-FCOIS-242424	24L1x24L2	24
FW-FCOIS-242430	24L1x24L2	30
FW-FCOIS-242436	24L1x24L2	36

Outside

Model	Length	Height
FW-FCOOS-242418	24L1x24L2	18
FW-FCOOS-242418	24L1x24L2	24
FW-FCOOS-242418	24L1x24L2	30
FW-FCOOS-242418	24L1x24L2	36

Planter



Wall sections up to L 96".

Model	Length	Width	Height
FMP-F-184818	18	48	18
FMP-F-246018	24	60	18
FMP-F-187218	18	72	18
FMP-F-249618	24	96	18
FMP-F-184824	18	48	24
FMP-F-246024	24	60	24
FMP-F-187224	18	72	24
FMP-F-249624	24	96	24
FMP-F-184830	18	48	30
FMP-F-246030	24	60	30
FMP-F-187230	18	72	30
FMP-F-249630	24	96	30
FMP-F-184836	18	48	36
FMP-F-246036	24	60	36
FMP-F-187236	18	72	36
FMP-F-249636	24	96	36

Planters

Metal planters help define and enhance your space. They're useful for highlighting entryways, acting as spatial divisions or guardrails, or just adding a pop of color. Available in multiple sizes to support any use — from residential to large scale commercial or streetscapes.



Mixed-Use / Seattle, WA

Square



Sizes:

PSQ-F-242418	24x24x18H	PSQ-F-363636	36x36x36H
PSQ-F-242424	24x24x24H	PSQ-F-363624	36x36x24H
PSQ-F-242430	24x24x30H	PSQ-F-484836	48x48x36H
PSQ-F-363624	36x36x24H	PSQ-F-484848	48x48x48H

Cylinder



Sizes:

PCY-F-2418	24x18H	PCY-F-3624	36x24H
PCY-F-2424	24x24H	PCY-F-3636	36x36H
PCY-F-2436	24x30H	PCY-F-4836	48x36H

Tapered Cylinder



Sizes:

PTC-F-2430	24x30H	PTC-F-3036	30x36H
PTC-F-2440	24x40H	PTC-F-3636	36x36H
PTC-F-3030	30x30H	PTC-F-3648	36x48H

Rectangle



Sizes:

PR-F-244824	24x48x24H	PR-F-364824	36x48x24H
PR-F-246030	24x60x30H	PR-F-367224	36x72x24H
PR-F-306024	30x60x24H	PR-F-367236	36x72x36H
PR-F-307230	30x72x30H	PR-F-427236	48x48x48H

Plaza - Round



Sizes:

PPRO-3615	36x15H	PPRO-7221	72x21H
PPRO-4815	48x15H	PPRO-3627	36x27H
PPRO-3621	36x21H	PPRO-4827	48x27H
PPRO-4821	48x21H	PPRO-7227	72x27H

Plaza - Taper



Sizes:

PPT-363633	36x36x33H	PPT-484839	48x48x39H
PPT-424239	42x42x39H	PPT-606051	60x60x51H

Rectangle - Narrow



Sizes:

PRN-F-123636	12x36x36H	PRN-F-184836	18x48x36H
PRN-F-123648	12x36x48H	PRN-F-184848	18x48x48H
PRN-F-124836	12x48x36H	PRN-F-186036	18x60x36H
PRN-F-124848	12x48x48H	PRN-F-186048	18x60x48H

Fold - Taper



Sizes:

PFT-303036	30x30x36H	PFT-404036	40x40x36H
PFT-303044	30x30x44H	PFT-484848	48x48x48H

Plaza - Square



Sizes:

PPS-363618	36x36x18H	PPS-484840	48x48x40H
PPS-363630	36x36x30H	PPS-484848	48x48x48H
PPS-363636	36x36x36H	PPS-606040	60x60x40H
PPS-404040	40x40x40H		

Plaza - Rectangle



Sizes:

PPR-367218	36x72x18H	PPR-489618	48x96x18H
PPR-367230	36x72x30H	PPR-489630	48x96x30H
PPR-487218	48x72x18H	PPR-487230	48x72x30H

Fold - Rectangle



Sizes:

PFR-304830	30x48x30H	PFR-487236	48x72x36H
PFR-406030	40x60x30H		

Fold - Square



Sizes:

PFS-363618	36x36x18H	PFS-484830	48x48x30H
PFS-363624	36x36x24H	PFS-606024	60x60x24H
PFS-484824	48x48x24H		

Seating

Stand alone or integral seating elements to liven up your space. Available in multiple sizes and shapes to support any location — from private respites to public or streetscape use. Available with standard Kebony cladding and optional backrests, handrests, and secure mounting attachments.



Streetscape / Seattle, WA

Seat Cover - Round



Sizes:

SSCR-242	24x2H	SSCR-482	48x2H
SSCR-302	30x2H	SSCR-602	60x2H
SSCR-362	36x2H	SSCR-722	72x2H
SSCR-402	40x2H		

Seat Cover - Straight



Sizes:

SSCRE-18362	18x36x2H	SSCRE-30482	30x48x2H
SSCRE-24362	24x36x2H	SSCRE-30602	30x60x2H

Seat Topper



Sizes:

STC-18482	18x48x2H	STC-24482	24x48x2H
STC-18602	18x60x2H	STC-24602	24x60x2H

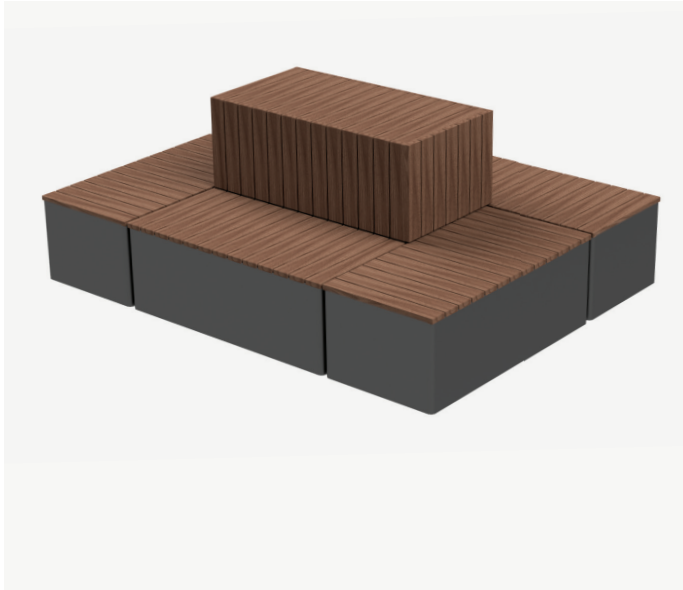
Cascade - Cantilevered



Sizes:

SCCS-184812	18x48x12H	SCCS-244812	24x48x12H
SCCS-186012	18x60x12H	SCCS-246012	24x60x12H

Stack - Seats



Sizes:
 SSB-244818 24x48x18H SSB-247218 24x72x18H

Cascade - Straight



Sizes:
 SCSS-224818 22x48x18H SCSS-229618 22x96x18H
 SCSS-227218 22x72x18H



Climate Pledge Arena / Seattle, WA

Cascade - Straight with backrest



Sizes:
 SCSSB-244836 24x48x36H SCSSB-249636 24x96x36H
 SCSSB-247236 24x72x36H

Cascade - Curved



Sizes:
 SCCS-226018 22x60Rx18H SCCS-228018 22x80Rx18H
 SCCS-227018 22x70Rx18H



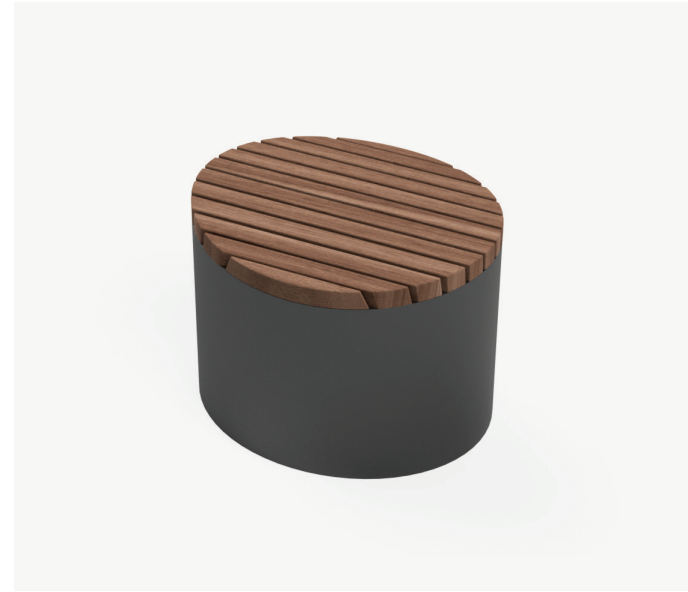
Mixed-Use / Seattle, WA

Arrow - Straight with backrest



Sizes:
SASB-246036 24x60x36H SASB-247536 24x75x36H

Sella



Sizes:
SSB-202419 20x24x19H SSB-306019 30x60x19H
SSB-244819 24x48x19H

Element - Straight



Sizes:
SES-244818 24x48x18H SES-249618 24x96x18H
SES-247218 24x72x18H

Element - Angled



Sizes:
SEA-244818 24x48x18H SEA-249618 24x96x18H
SEA-247218 24x72x18H

Ansa - Standard with backrest



Sizes:
SANSB-236032 23x60x32H SANSB-237232 24x72x32H

Ansa - Topper



Sizes:
SANTC-246015 24x60x15H SANTC-249615 24x96x15H
SANTC-247215 24x72x15H SANTC-2412015 24x120x15H

Ansa - Standard



Sizes:
SANS-246018 24x60x18H SANS-247218 24x72x18H

Cascade - Straight



Sizes:
SCSV-224818 22x48x18H SCSV-229618 22x96x18H
SCSV-227218 22x72x18H



Installation by and Photo courtesy of Intrinsic Landscaping



Installation by and Photo courtesy of Intrinsic Landscaping

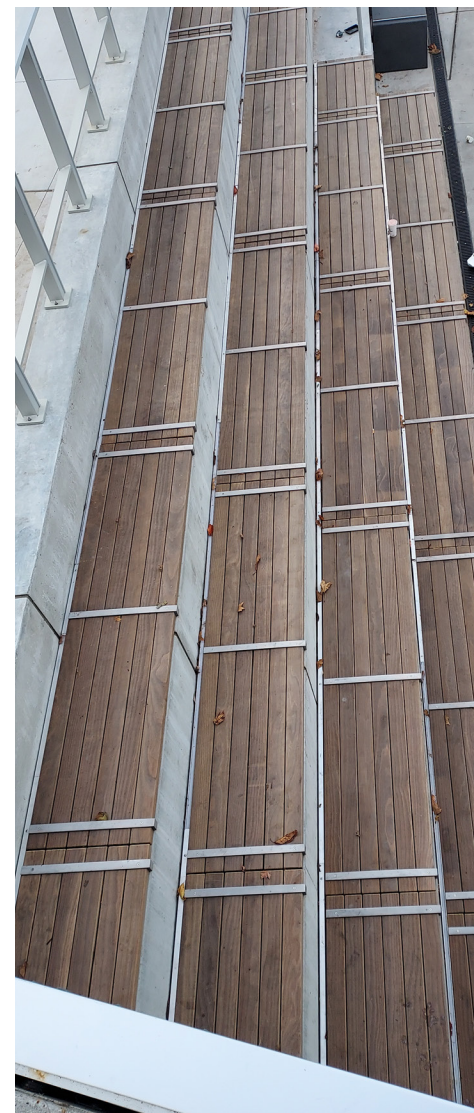


Photo courtesy of Jett Landscape Architects



Decorative Screens

Simple additions that can serve a multitude of purposes. Useful for decorative privacy, providing a structure for plants to grow on, or just adding a little interest and character to your space.



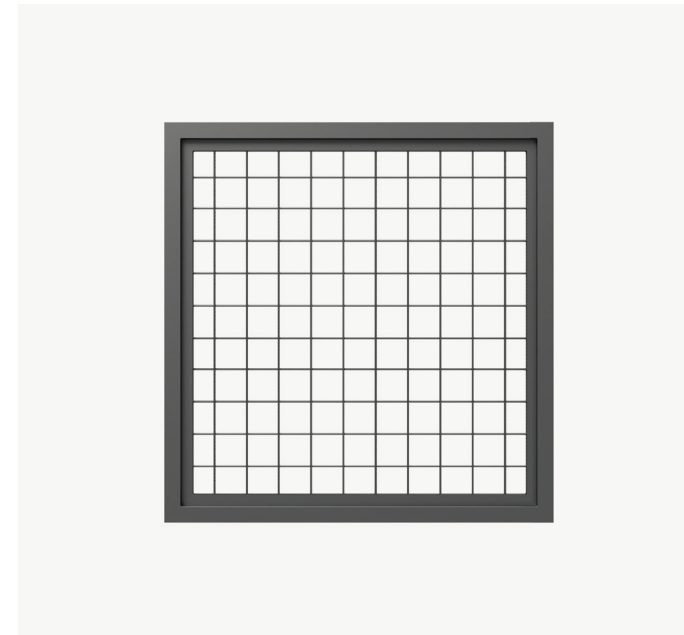
Installation by and Photo courtesy of JH Landscaping

Mixed-Use/ Seattle, WA

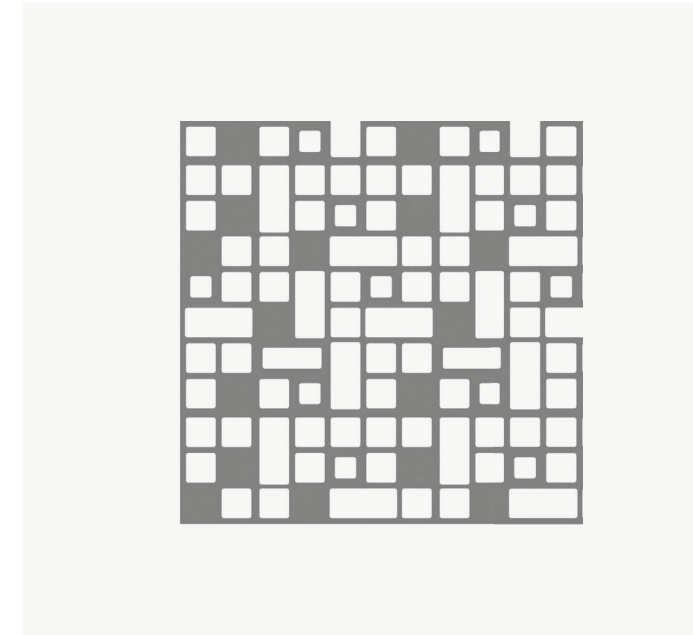
Screens Available In:

Quickship sizes and modular sections available in planter mount. Additional sizes and mounting styles available in standard lead times.

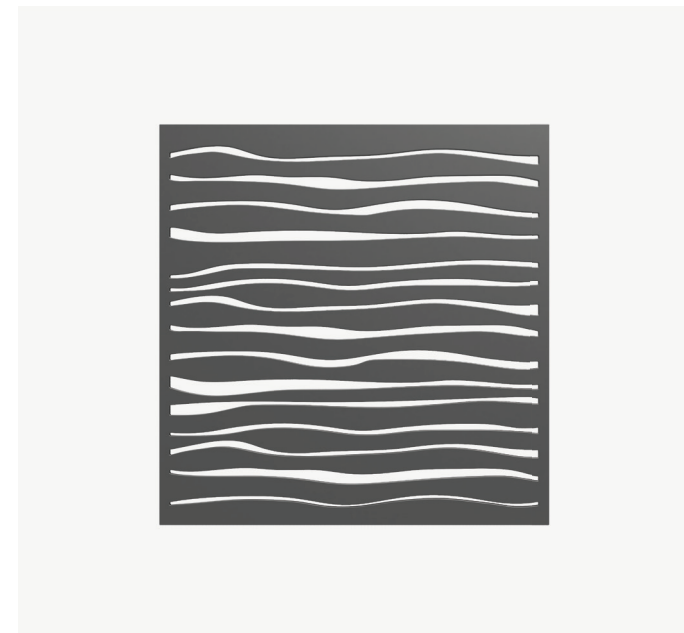
Mesh



Block



Wave



Model	Mat.	Length	Height
SPM-190-48-36	.190"	48	36
SPM-190-48-48	.190"	48	48
SPM-190-60-36	.190"	60	36
SPM-190-60-48	.190"	60	48
SPM-190-72-36	.190"	72	36
FMP-190-72-48	.190"	72	48

Features & Options

Customization without reinventing the wheel — a selection of proven solutions to common (and some not-so-common) landscape needs.

For All Products

Leveling Feet

Easily adjustable leveling feet in several heights and weight capacities.

- Standard 0-3" 200 lbs.
- Heavy Duty 0-3" 1,500 lbs.

Drip Tray

Tray that prevents drainage from leaking onto (and potentially staining) adjacent hard surfaces. Designed to match the style and color of your planter.

Irrigation Reservoir

Integral reservoir to enable planters to be self-irrigating — perfect for when external irrigation is either impractical or not desired for design purposes.

Plant Anchor Tie Off

Integral tie off points to allow the attachment of stabilizing cables for root balls, or guy wires for larger plants and trees.

Anchors

Stainless steel tamper proof security anchors or bolts.

Material, Color Options, & Finishes

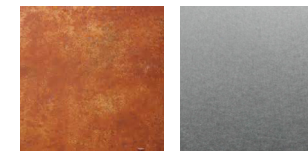
All products are available in aluminum and corten steel. All seat frames are available in powdered coated mild steel. Most seat frames are available in matte sanded stainless steel.

Material

Standard

- 5052-H32 Grade Aluminum .125"-.250" thick
- A36 Steel .1875"-.375" thick - Select benches only
- A588 Weathering Steel .125"-.1875" thick
- 304 Stainless Steel .1875"-.375" thick - Select benches only

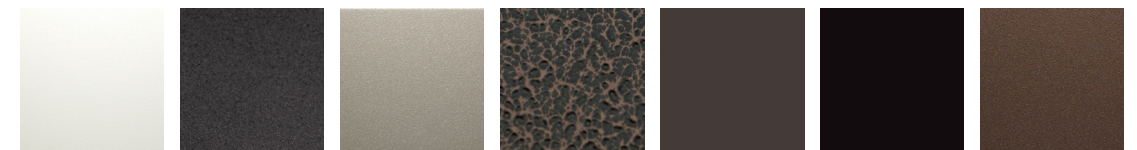
Uncoated



Natural Finish

Sanded Stainless Steel

Standard Powder Coatings



White

Graphite

Light Gray

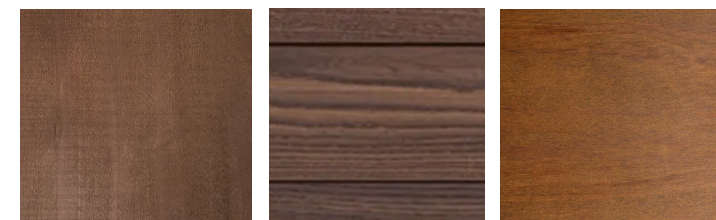
Hammered Copper

Dark Bronze

Black

Rust

Standard Wood Options



Kebony

Thermory

FSC IPE

How to Order

Quick and simple ordering process. Contact a sales representative or submit the required information and we will provide a quote within 1-2 business days. Quickship items will typically ship within 2-3 weeks from order placement.

Standard Catalog Item

- Item
- Size
- Material
- Finish
- Quantity
- Options
- Delivery address

Shipping

- We ship throughout North America. We work with several national trucking companies and freight brokers to get the most competitive rate for LTL or full truck loads. Our products ship boxed or crated and palletized. Special delivery options are available.

Additional Products

Have a product need that isn't in our limited Quickship catalog? We have a comprehensive list of additional standard products and sizes, as well as fully customizable products. Our design team is happy to collaborate directly with architects and engineers, providing detailed CAD and BIM drawings that seamlessly integrate with building and site plans.

Services

- Training
- Lunch and Learn opportunities
- Technical and engineering guidance
- Design recommendations
- Custom Recuro layout plans and details
- Analysis and recommendations of Designer's Recuro plans and details

4033 134th ST. NE
Marysville, WA 98271

360.502.6344
info@architerradesigns.com

architerradesigns.com

About Architerra

Architerra started out as a landscape architecture and installation company. During our initial years we often had a hard time finding edging, planters, and other features that met the bar for quality. So we started crafting our own, leveraging our planning and installation experience to produce elements that were not only beautiful, but also solved common problems for architects and installers.

The products we design and craft today are the products we'd want to use and install.

Our current offerings include planters, water features, modular steel edging and retaining systems, furniture, and other custom site features. Have a unique challenge? Our design team is happy to collaborate directly with architects and engineers, providing detailed CAD drawings that seamlessly integrate with building and site plans. We provide local delivery to the Pacific Northwest. We ship throughout the US and Canada.



Photo courtesy of Jett Landscape Architecture